

1. (Evidence given to the Factory Inquiry Commission 1833)

'The hours of labour at that mill were from five in a morning till eight at night, with an interval for refreshments of thirty minutes at noon.'....'I have been in the mills at all hours and I have never in my life seen the machinery stopped at meal times in any of the mills...'

2. .” Charles Aberdeen worked in a Manchester cotton factory, written in 1832.

“The smallest child in the factories were scavengers.....they go under the machine, while it is going.....it is very dangerous when they first come, but they become used to it.” Charles Aberdeen worked in a Manchester cotton factory, written in 1832.

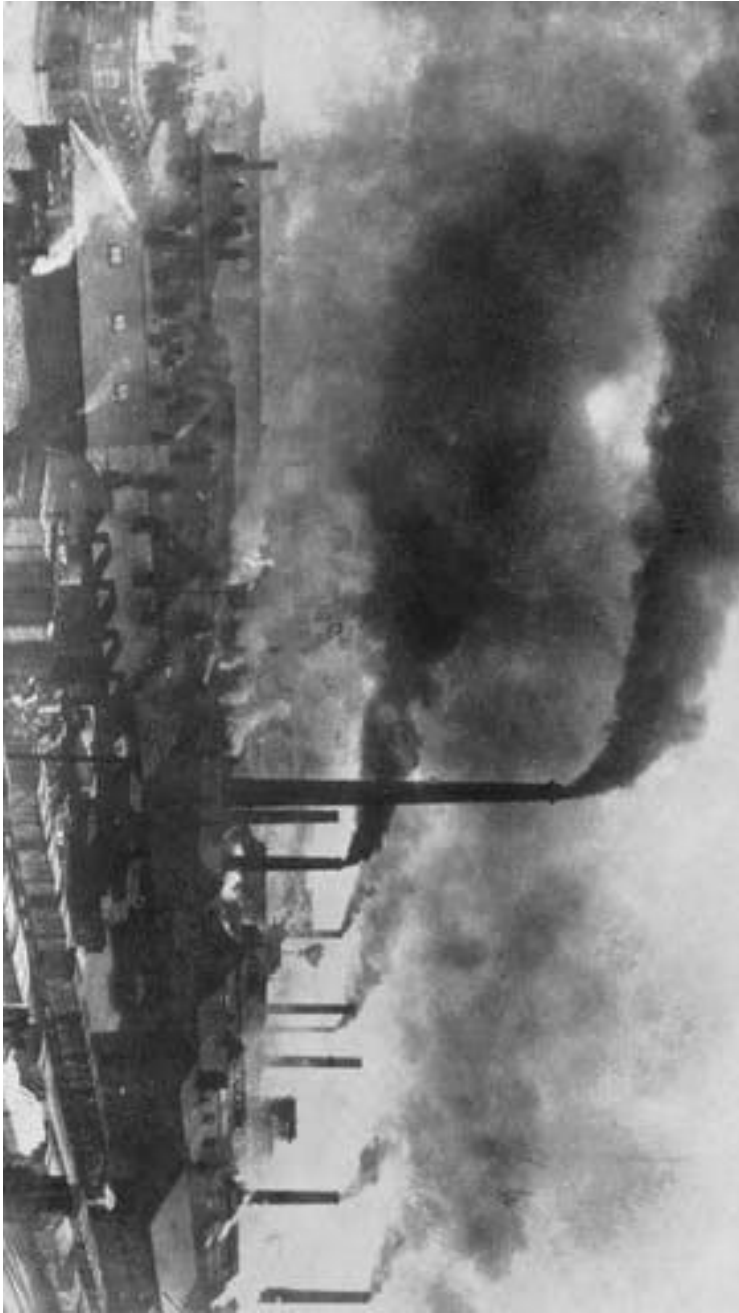
3. Picture of a Textile Mill



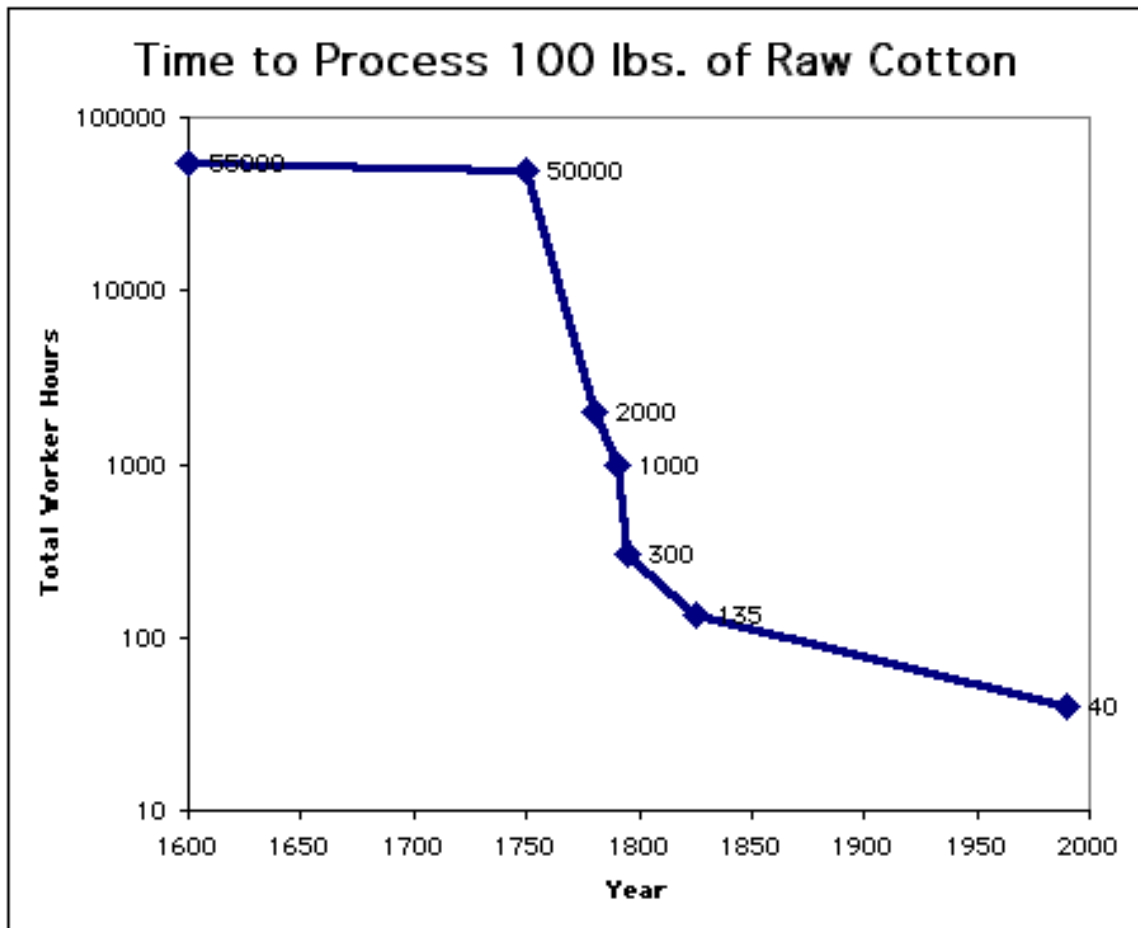
4. Doctors using anesthesia before surgery



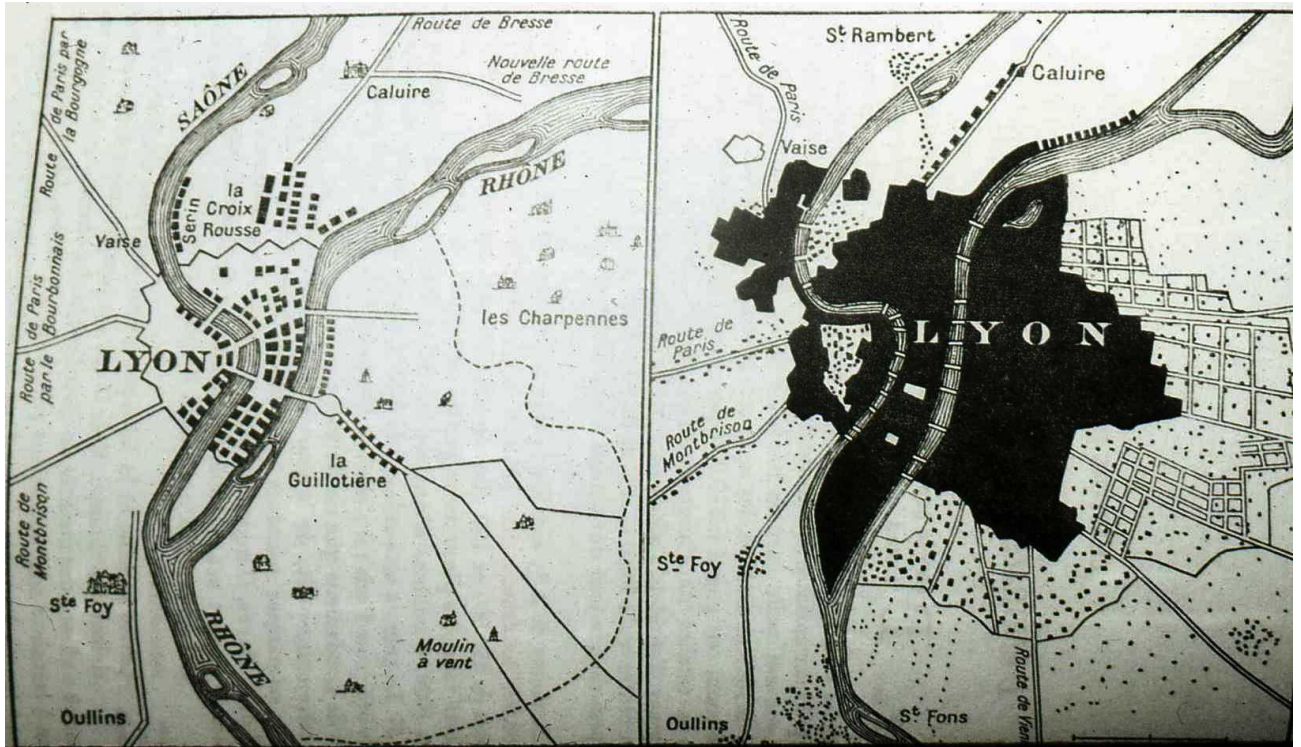
5. A factory



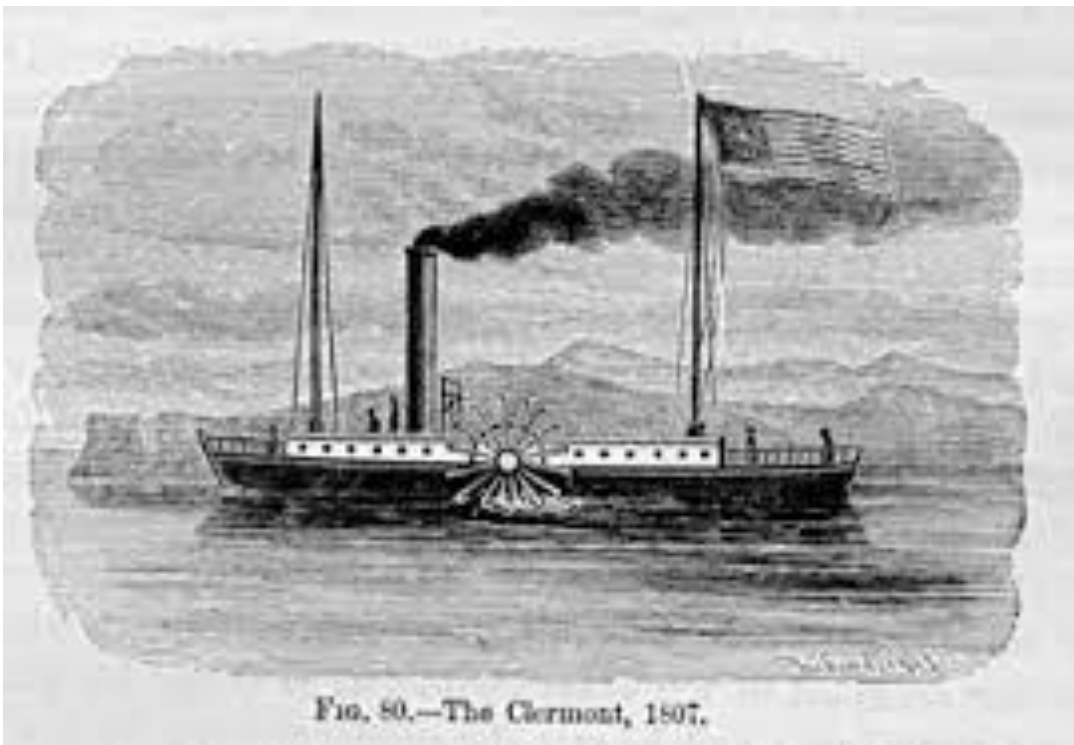
6. Graph of time needed to process cotton



7. Map of Lyon, France over time



8. *Clermont*, a steamboat built by Robert Fulton



Clermont was able to make the trip from NYC to Albany, NY in 32 hours. This trip would have taken about 4 days using sails.

9. A department store



10. A telegraph message from New York to San Francisco. November 24, 1896

Form No. 1.

THE WESTERN UNION TELEGRAPH COMPANY.

This Company TRANSMITS and DELIVERS messages only on conditions limiting its liability, which have been assented to by the sender of the following message. Errors can be guarded against only by repeating a message back to the sending station for comparison, and the company will not hold itself liable for errors or delays in transmission or delivery of Unrepeated Messages, beyond the amount of charge thereon, nor in any case where the claim is not presented in writing within sixty days after sending the message.

This is an UNREPEATED MESSAGE, and is delivered by request of the sender, under the conditions named above.

THOS. T. ECKERT, General Manager. NORVIN GREEN, President.

NUMBER	SENT BY	RECD BY	CHECK
W 229 Ch	V.V. M.A.	34 Df	

Received at **SAN FRANCISCO, CALA.** M. Standard Time. *3 pm* Nov 24 1896

Dated *New York 24*

To *Lloyd Lewis Pres St*

Sanfran

Drabble befool beautifier pham ache
factory absolute dark danish more character
deletion counterfeit clapper china dander
~~exedous~~ *exedous dangk director dakoit forest*
fortress dangk H B Casore forester christendom

11. Excerpt of folk song “John Henry”

Now the man that invented the steam drill/Thought he was mighty fine/But John Henry made fifteen feet/The steam drill only made nine, Lord, Lord/The steam drill only made nine/John Henry hammered in the mountains/His hammer was striking fire/But he worked so hard, he broke his poor heart/He laid down his hammer and he died, Lord, Lord/He laid down his hammer and he died/John Henry had a little woman/ Her name was Polly Ann John Henry took sick and went to his bed/Polly Ann drove steel like a man, Lord, Lord/Polly Ann drove steel like a man

12. George Gould, a Manchester merchant, written in 1816.

“Two children I know got employment in a factory when they were five years old.....the spinning men or women employ children if they can get a child to do their business.....the child is paid one shilling or one shilling and six pence, and they will take that (five year old) child before they take an older one who will cost more.”

13. Children workers from a coal mine



14. By the reverent W. T. Elsing New York City
Mission Monthly, Volumes 12-13, 1899

"The neglected children of our foreigners, crowded in dark and unwholesome tenement houses, furnish an ever increasing army of young criminals. The presence of foreigners is exerting a blighting influence on our American Sabbath. The shops and stores are in full operation on the Lord's day. The streets are crowded with push-carts and eager venders are loudly shouting their wares. Pleasure excursions, dance halls and theaters do an enormous business on Sundays.....

15. McCormick's Reaper



16. A Toilet



17. Union Artillery Battery during the US Civil War



18. Graph of World Population and Production

Figure 2

World Population and Production

